



**Towing Products**  
- Since 1938

# ICC TRUCK HITCHES



**QUICK  
30 to 45  
minute  
average  
install  
time!**

**# 91601**

**FORD ICC Truck Hitch with tilt bed**

- Fits 1999-2016 Ford F350-F550 Cab & Chassis Trucks with platform hoist beds that overhang truck frame rail
- Fixed position pintle mount

**# 91603**

**GM / CHEVROLET ICC Truck Hitch with tilt bed**

- Fits 1999-2016 GM / Chevrolet 3500 Cab & Chassis Trucks with platform hoist beds that overhang truck frame rail
- Fixed position pintle mount



Photo represents  
ACME #'s 91471 & 91602

**# 91471**

**FORD ICC Truck Hitch**

- Fits 1999-2016 Ford F350-F550 Cab & Chassis Trucks
- Adjustable height pintle mount; 3 optional positions

**# 91602**

**GM / CHEVROLET ICC Truck Hitch**

- Fits 1999-2016 Chevrolet 3500 Cab & Chassis Trucks
- Adjustable height pintle mount; 3 optional positions

- SAE V-5 rated, tested & approved
- Unique, exclusive multi-function design
- Pintle Hook mounting platform and 2" x 2" receiver opening
- Pintle mount rated up to 16,000 lbs. GTW
- Ball mount receiver opening rated up to 10,000 lbs. GTW weight carrying / 12,000 lbs. GTW weight distributing
- Easy to install
- All mounting hardware included
- Includes ICC bumper protection
- Two "D" ring safety chain attachments
- Wiring bracket included
- Black powder coat finish
- Made in USA

**MADE IN THE USA**



**ACME Products Company**

**4347 Clary Boulevard**

**Kansas City, MO 64130**

**816.921.0444**

**800.821.7576**

**Fax: 816.921.8451**

**www.acmehitch.com**

**Steve@acmehitch.com**

**Justin@acmehitch.com**

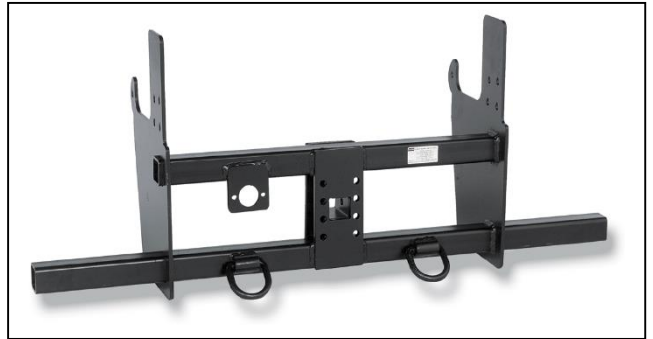


Towing Products - Since 1938

# ICC TRUCK HITCHES & RECEIVER TUBES



# 91601 Ford ICC Truck Hitch With Tilt Bed  
# 91603 Chevrolet ICC Truck Hitch With Tilt Bed



# 91471 Ford ICC Truck Hitch  
# 91602 Chevrolet ICC Truck Hitch



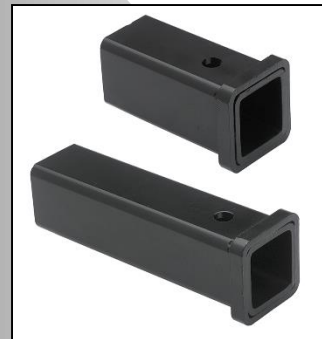
# 91478  
• Fits 2001 – 2010 Chevrolet Silverado / GMC Sierra Pickup 2500 HD & 3500 HD Long Bed Only



# 91516  
• Fits 2001 – 2010 Ford F350 – F550 Cab & Chassis Trucks, 7 1/2" drop; Chevrolet 3500 Cab & Chassis Trucks, 7 1/2" drop



Heavy Duty Custom-Fit Hitches  
for Pickup Trucks, Vans & SUV's  
(All mounting hardware included)



Receiver Tubes -  
6" to 72" in length; welded stress  
collars; raw or black powder coat finish

All ACME hitches, mounts and balls meet and/or exceed all SAE V-5 VESC Regulation specifications.